

# Catskills Hatzalah differences

A Seasonal Publication Highlighting The Difference  
Catskills Hatzalah Has Been Making For Nearly Three Decades



PAGE 7

## SAVING LIVES THEN... SAVING LIVES NOW

**New Story**  
Will Be Here

PAGE 7

**New Story**  
Will Be Here

PAGE 7

**New Story**  
Will Be Here

PAGE 7

**Shabbos Hatzalah**  
CATSKILLS CAMPAIGN



**שבת הצלה**  
זומער קאמפיין

# You can help us make the difference

## Dear Friend,

Those of you who are familiar with the lifesaving work of Catskills Hatzalah know just how valuable our emergency medical services can be during the summer months.

But what you may not know is that we've spent most of the winter building, planning and organizing – so that the heroic volunteers of Catskills Hatzalah can be available at moment's notice to help you in your time of emergency.

To better serve the Catskills summer community, we've launched multiple projects to boost response times, increase radio coverage and maximize overall efficiency. Here is what's been done to date:

- **The construction of the new Catskills Hatzalah Garage** has just been finished to serve as a valuable resource in protecting ambulances from the elements and housing important medical equipment
- **An integrated Emergency Crisis Center** has been established within the new garage to better coordinate with other emergency agencies during catastrophic situations
- **An internal Radio Dispatch Center equipped with advanced technology** to provide a wider coverage area for emergency radio communications has been launched

- **The addition of 3 new, state-of-the-art ambulances** to the Catskills Hatzalah vehicle fleet ensures definite availability at all times and allows for remarkably faster response times

In all, we've managed to get all these impressive accomplishments done over the past few winter months – but we can't complete it alone.

Catskills Hatzalah must rely on the much-needed support of people like you who will be spending the summer upstate and relying on our valuable emergency medical services in life-threatening situations.

Therefore, we ask that you take part in this year's Shabbos Hatzalah Emergency Campaign by sending in your tax-deductible contribution to help fund our important work. So many precious lives are depending on Catskills Hatzalah – you can help us make the difference!

Thank you for your  
generous support,

*Rabbi Yehuda Frankel*

*Boruch Gips*

*Yitzchek Levine*

*Yidel Feig*

*Yentov Malik*

*Yankel Richter*

Catskills Hatzalah  
Coordinators

Donation  
Recommendations  
For 2012

**YOUR  
SUPPORT  
MAKES A  
DIFFERENCE!**

Friend of  
Catskills Hatzalah : **\$72**

Supporter of  
Catskills Hatzalah : **\$180**

Patron of  
Catskills Hatzalah : **\$360**

Benefactor of  
Catskills Hatzalah : **\$1,200**

Pillar of  
Catskills Hatzalah : **\$1,800**

## SEND IN YOUR LIFESAVING DONATION TODAY!

**BY MAIL:**

**CATSKILLS HATZALAH**

P.O.B. 50 Monticello, NY 12701

**ADMINISTRATIVE OFFICE**

1340 E. 9th Street  
Brooklyn, NY 11230

**BY CREDIT CARD:**

[www.HatzalahCatskills.org](http://www.HatzalahCatskills.org)

718-998-9000

## KNOW EXACTLY WHERE TO GO!

The legendary Catskills Hatzalah Summer Map can be downloaded to your GPS system at absolutely no cost – visit [www.CHVAC.net](http://www.CHVAC.net).



# Catskills Hatzalah **IN ACTION**



**WE'RE MAKING A LIFESAVING DIFFERENCE:  
PLEASE JOIN US  
IN THAT ACCOMPLISHMENT!**



# NEW CATSKILLS HATZALAH GARAGE PROVIDES LIFESAVING OPPORTUNITIES



**History has just been made** on Brickman Road in South Fallsburg with the completion of the first ever Catskills Hatzalah Garage headquarters.


“This ambitious undertaking was long overdue and will allow us to improve our lifesaving services for the entire region,” says Catskills Hatzalah Coordinator Mr. Bernie Gips. “And based on the tremendous call volume and serious incidents that we experienced last year, this is a welcome addition that’ll be enthusiastically embraced by the community over the coming months.”

Known as the Herman & Piri Altmann Building, this state-of-the-art facility is unlike any other Hatzalah garage currently in existence. In addition to housing 3 large ambulance bays capable of protecting up to 8 Catskills Hatzalah emergency vehicles during the frigid winter months, it also features an integrated **Emergency Crisis Center for use during catastrophic situations.**


“Up until now, when we had situations involving searches for missing people, for example, it took time to gather everybody together, establish a plan, coordinate with other police and



**State-of-the-art Radio Dispatch Center** provides wider coverage area for emergency radio communications



**Emergency Crisis Center** allows for swift coordination with other emergency agencies during catastrophic situations



**Training area** allows members to stay updated on the latest medical advances and procedures in emergency medicine

rescue agencies assisting in the search, and so on,” explains Mr. Gips. “As you can imagine, this usually got very complicated and created a dangerous time lapse. **In our new crisis center, we’ve got everything in place and wired up to conduct an inter-agency search immediately.”**

In fact, Catskills Hatzalah members can now sit in a specially equipped room with emergency personnel from the state police, sheriff and parks departments, and communicate with numerous rescue agencies on their own radio frequencies. This allows rescuers to get real-time updates on what’s

occurring, instantly view important information and maps online, and streamline the search process in ways previously unimagined.

But it doesn’t end there. The Emergency Crisis Center can be used to oversee operations at mass-casualty incidents or weather-related emergencies like storm preparedness and hurricane evacuations. Additionally, a hi-tech Radio Dispatch Center now provides a wider coverage area for emergency radio communications and helps to improve response times.

According to Rabbi David Cohen, CEO of Chevre Hatzalah, the

importance of this project is unparalleled. “Although it took a tremendous chunk out of Catskills Hatzalah’s annual budget, we realized that with the exponential growth of residents during the summer months, this project was an absolute necessity,” he emphasizes. “We just couldn’t wait it out any longer –people’s lives are at stake.”

While the new Catskills Hatzalah Garage has just been built and put to good use, **dedication opportunities are still available to offset the exorbitant construction costs. Please call 718.998.9000 for sponsorship information.**

**Administrative offices** allow Catskills Hatzalah members to coordinate meetings with other officials and oversee organizational operations

**Large oxygen and equipment storage area** allows member to stock up on lifesaving medical equipment

**Large ambulance bays** protect costly ambulances from external elements and allow for quick response times in winter months

**Automatic generators ensure** continuous power in the event of electrical outages for 24-hour emergency communications ability

**Heated driveways** allow for rapid deployment of emergency vehicles during snowy or icy weather

WHO ARE THE PEOPLE OF CATSKILLS HATZOLAH AND **HOW THEY HELP SAVE PEOPLE'S LIVES?**

**Dispatcher:** Fields Emergency Calls

When an emergency call is placed to Catskills Hatzalah, the dispatcher is the one that answers the phone and coordinates the response by available members via a computerized HCAD dispatch system. Every Catskills Hatzalah dispatcher is familiar with the over 100 square miles of upstate roads, colonies and camps that comprise of the Jewish vacation areas, which maximizes emergency response times and minimizes delays.

**EMT:** Provides Basic Life Support

Also known as Emergency Medical Technicians, EMTs can provide patients with basic life support care, such as maintaining an open airway, breathing and circulation, providing CPR and cardiac defibrillation when necessary, controlling severe bleeding and preventing shock. Every Catskills Hatzalah EMT is equipped with specialized medical equipment and an oxygen tank which is kept in their personal vehicle for rapid deployment.

**Paramedic:** Provides Advanced Life Support

Every Catskills Hatzalah Paramedic is trained to provide pre-hospital advanced medical and trauma care. They can perform a variety of medical procedures such as obtaining IV access, cardiac monitoring and other advanced techniques and assessments. Most importantly, Catskills Hatzalah Paramedics can administer a variety of emergency and life-saving medications that regular Emergency Medical Technicians (EMTs) can't.

Dedicate an **emergency kit...** and help save a life!

Partner with Catskills Hatzalah by sponsoring lifesaving medical equipment in memory of a loved one, in honor of a family member, or to commemorate a special occasion...and help us make a difference.

Please call **718.998.9000** to dedicate your sponsorship **today**

**\$360**

**TRAUMA KIT**

Disposable Gloves / Sterile 4x4 Gauze Pads / Sterile 5x9 Gauze Pads / Adhesive Tape / Roller Gauze / Multi-Trauma Dressing / Ice Packs / Bandage Shears / Triangular Bandages / Sterile Saline / Air Occlusive Dressing / Liquid Glucose / Sterile Burn Sheet / Sterile OB Kit / Adult Blood Pressure Cuff / Pediatric Blood Pressure Cuff / Stethoscope / Rigid Extrication Collars / Pen Light / Disposable Rescue Blanket / Ambulance Call Reports

**\$720**

**OXYGEN RESUSCITATION KIT**

Portable "D" Oxygen Tank / Adult BVM (Bag-Valve Mask) / Pediatric BVM (Bag-Valve Mask) / Oropharyngeal Airways / Non-Rebreather Oxygen Masks / Nasal Cannula Oxygen Masks / Portable Suction Equipment / Nebulizer Masks / Albuterol

**\$2,800**

**ADVANCED MEDICAL EQUIPMENT**

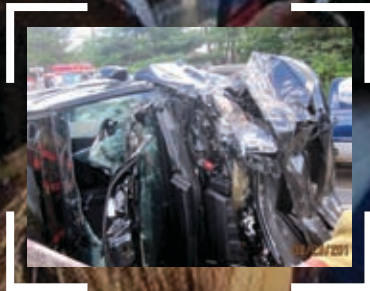
Portable Defibrillator / Adult Epi-Pen / Pediatric Epi-Pen

**\$28,600**

**ADVANCED LIFE SUPPORT/PARAMEDIC EQUIPMENT**

12 Lead EKG Monitor / Drug & IV Equipment / Intubation Kits / IV Kits Cardiac Medications / Diabetic Medications / Seizure Medications / Pain Management Medications / First-Line Drugs

# SAVING LIVES THEN... SAVING LIVES NOW



a history of dedication,  
**service & care**

Today, Catskills Hatzalah is a renowned organization that boasts lightning-quick response times, state-of-the-art dispatching technology and a wide network of members who are available to respond to medical emergencies throughout upstate New York.

But it wasn't always that way. ▶

2012 OPERATING  
**BUDGET**  
 FOR CATSKILLS HATZALAH  
**\$525,000**

AMBULANCE  
 & LIABILITY INSURANCE  
**\$150,000**

RADIO SYSTEM T-1 LINES &  
 COMMUNICATIONS  
**\$100,000**

AMBULANCE  
 MAINTENANCE &  
 EQUIPMENT  
**\$75,000**

BASIC & ADVANCED  
 LIFE SUPPORT  
**\$90,000**

OXYGEN & RADIOS  
**\$10,000**

DIESEL FUEL COSTS  
**\$50,000**

OPERATIONS/MAPS/ADS  
**\$50,000**



◀ I remember a time back in the early days of Catskills Hatzalah, when responding to calls was sometimes a challenge,” recalls Rabbi Mechel Handler, a longtime member and administrator of Chevra Hatzalah.

“One day we got an emergency call from a bungalow colony in a distant location. I began driving to the call, but with all those winding country roads and narrow side streets, I got completely lost. My radio transmission was very crackly because of the distance from where our antennas were situated, the dispatcher was having a hard time understanding my predicament, and this all happened way before GPS navigation was invented.”

Rabbi Handler pauses and shakes his head ruefully at the memory.

“So with no other choice, I stopped my car in middle of an obscure road, turned off my siren, and pulled out a thick Rand-McNally paper map from my glove compartment. I then proceeded to unfold it on the hood of my car and spent the next agonizing few minutes figuring out where to go. Thankfully, I finally determined which road to take and ultimately arrived at the call to assist the patient.”

But the sequel of this true story is even better – and reflects the primary mission of Catskills Hatzalah to help

those in times of distress.

“The very next summer,” concludes Rabbi Handler, “we created the Catskills Hatzalah Summer map which was designed specifically to boost emergency response times. And since then, I’ve never gotten lost on a call again.”

**A Legendary History of Dedication and Innovation**

Founded in 1984, Catskills Hatzalah has been providing quality pre-hospital emergency medical care for the thousands of families who

**But to be there for you, Catskills Hatzalah needs you to be there for them.**

**AMBULANCE DEDICATION OPPORTUNITIES**

Catskills Hatzalah is currently upgrading its aging ambulance fleet in its quest to provide emergency medical services of the highest caliber. While the price tag for a new ambulance is over \$170,000, the endless merit that you will gain from helping Catskills Hatzalah save countless lives is beyond words.







migrate from heavily populated Jewish communities to spend the summer season enjoying the relaxing atmosphere of the Catskills region.

What began as a small group of trained volunteers responding to emergency calls for a few hundred families situated in the Fallsburg vicinity, has since blossomed into an organization responsible for the safety of over 300 colonies and summer camps spread across a radius of over 1,000 square miles.

While Catskills Hatzalah maintains a close affiliation with other Hatzalah organizations, the Catskills division remains independent and receives no financial support from any other Hatzalah organization or government agency; Catskills Hatzalah must raise the necessary funds to maintain the new garage, ambulance fleet, radio system and medical equipment used by volunteers responding to calls.



And that requires significant money – well over \$500,000.

Last summer, Catskills Hatzalah responded to more than 2,000 emergency calls – many of which would have ended tragically – if not for the quick response times of its 150 dedicated volunteers, their lifesaving medical equipment and 13 state-of-the-art ambulances strategically situated throughout the Catskill Mountains for a swift response to every call.

Additionally, Catskills Hatzalah has expanded its services and operates year-round in the Sullivan County region to benefit the many families who frequently spend weekends in their vacation homes.

But to be there for you, Catskills Hatzalah needs you to be there for them.

The staggering budget required to



fund the upcoming summer season is anticipated to reach almost \$600,000. Without the financial support of people like you who are spending the summer upstate, the ability for Catskills Hatzalah to respond to every emergency call in a timely manner will be in jeopardy – as will the lives of our friends, neighbors and families.

### **Your Help Will Make The Difference**

The upcoming Shabbos Hatzalah Emergency Campaign will be taking place in colonies, camps and communities throughout Sullivan and Ulster Counties and is intended to generate much-needed support for the Catskills Hatzalah division.

**Please be sure answer the call for the dedicated members of Catskills Hatzalah... who are always ready and there to answer your call.**

## Yidish Text

# fastFACTS

Catskills Hatzalah maintains a fleet of 13 state-of-the-art ambulances that are equipped with specialized medical and rescue equipment specifically for the Catskills region

**Numerous emergency calls will require Catskills Hatzalah to transport patients to out-of-area hospitals that can extend transportation times up to 4 hours and consume over 20 extra gallons of fuel per call**

Catskills Hatzalah maintains a sophisticated two-way radio system that allows for emergency communications covering over a 100 square mile radius that costs well over \$125,000 each summer season

**In addition to standard mechanical repairs and gasoline usage for each Catskills Hatzalah ambulance, the costs posed by auto insurance and equipment expenses total over \$350,000 a year**

The staggering budget of Catskills Hatzalah is funded solely by donations from loyal supporters – the Catskills division receives no outside support from any other organization or government agency

# Timelines of DIFFERENCE

Detailing the impressive growth of Catskills Hatzalah

- 1984** The Catskills Hatzalah division was established by a small group of volunteers and based out of the Fallsburg vicinity
- 1986** The now-legendary Catskills Hatzalah Summer map was created to boost emergency response times
- 1988** Catskills Hatzalah obtains its first NYS Dept. of Health certified ambulance to allow for speedy emergency transports
- 1990** The Catskills Hatzalah ALS/Paramedic program is launched – the first of its kind in Sullivan County
- 1993** A unique partnership is established between Catskills Hatzalah and Medivac to establish the first helicopter-based emergency medical transport system in the region
- 1995** The Catskills Hatzalah Emergency Search & Rescue Team is founded to assist local authorities in missing persons operations
- 1997** The ambulance fleet of Catskills Hatzalah features 8 NYS Dept. of Health certified ambulances that are strategically located across the region for rapid deployment to emergencies
- 2001** The Catskills Hatzalah division purchases a specialized ambulance with customized life-support equipment for high-risk patient transfers
- 2006** To enhance community relations, Catskills Hatzalah holds its first-annual summer breakfast event with local police, fire and EMS agencies
- 2007** The paramedics of Catskills Hatzalah provided with updated ventilators and IV pumps to improve high-risk patient transfer operations
- 2009** The updated Catskills Hatzalah GPS Summer Map is made available to the general public via the website
- 2012** The new Catskills Hatzalah Garage is constructed and features an integrated Emergency Crisis Center along with an internal Radio Dispatch Center that will allow Catskills Hatzalah to provide you with quality medical care all summer – and all year – long

# New Story

# New Story Continued

Yidish Text



CATSKILLS HATZALAH  
PHONE .718.998.9000  
www.catskillshatzalah.com

MAILING ADDRESS  
P.O.B. 50  
Monticello, NY 12701

ADMINISTRATIVE OFFICE  
1340 E. 9th Street  
Brooklyn, NY 11230

**CATSKILLS COORDINATORS**

Rabbi Yehuda Frankel  
Boruch Gips  
Yitzchok Levine  
Yidel Feig  
Yomtou Malik  
Yankel Richter  
Eli Serebrowski  
Fleet & Equipment Manager  
Jerry Rosenberg, CPA-C, EMT-P  
ALS Supervisor  
Dr. Richard Friedman  
Medical Director-Catskills

**CHEVRA HATZALAH  
EXECUTIVE BOARD**

Isaac Stern  
Zelig Gitelis  
Heshy Jacob  
Benzi Lebovits  
Yom Tou Malik  
David Shipper  
Isaac Unger  
Shlomo Yosef Waldman  
Moshe Weber

**CHIEF EXECUTIVE OFFICER**  
Rabbi David Cohen

**ADMINISTRATOR**  
Rabbi Mechel Handler

**LAY ADVISORY COMMITTEE:**  
Moshe Neiman  
Mel Zachter

**VAAD HARABONIM:**  
Rau Dovid Cohen Shlit"א  
Rau Dovid Feinstein Shlit"א  
Rau Meshulim Polotchek Shlit"א  
Rau Chaim Yankel Tauber Shlit"א

# An Open Letter TO THE PUBLIC

## REGARDING THE RISKS OF LONG DISTANCE TRANSPORTS

Dear Friends,

Catskills Hatzalah has always been committed to properly servicing the emergency medical needs of those in the Sullivan and Ulster County regions during the summer months. However, it is vital for the public to understand that time is a critical factor when it comes to saving a life. While Catskills Hatzalah provides both basic and advanced life support, pre-hospital medical care is only an initial step towards more definitive medical intervention at a hospital facility.

As a rule, patients with acute emergencies must be transported to the nearest appropriate medical facility for stabilization, and in many situations, it is against the law for an ambulance to bypass a local hospital. Long transports can endanger the life of a potentially unstable patient by delaying hospital care.

As such, Catskills Hatzalah's policy is to transport the patient to the closest hospital. Once the patient has been stabilized, they can then make arrangements with their personal physician to transfer to a more distant hospital. (Please note: While Catskills Hatzalah does not usually advocate that unstable patients be transferred to the city, our coordinators and volunteers will assist the family in making the necessary arrangements when medically warranted and permissible.)

Common sense dictates that patients who have a history of chronic illnesses, those who require specialized medical care, women in their final stages of pregnancy, or high-risk patients with special needs must consult with their personal physician and seek Rabbinical advice prior to making their summer plans. It must be understood that in the event of an emergency, Catskills Hatzalah will transport the high-risk patient to a local hospital for stabilization, after which appropriate transfer arrangements may be made.

It is our fervent hope that you enjoy this season in the best of health and have a safe summer.

We remain,

Catskills Hatzalah Coordinators

COMPREHENSIVE LISTING OF

# Alternate Routes TO AND FROM The Mountains:

## From the Catskills

### If you are near Route 52:

Take Route 52 South until Route 84 East, 84 East until Exit 10 - 9W South. Take 9W South into the Palisades Parkway South. (might have some traffic in town of Newburgh).

### If you are near Route 42:

Take Route 42 South for 20 miles to 97 South until end. Take 6 East to 23 South for 45 miles until 80 East or until 46 East to Route 3 East to the Lincoln Tunnel (this road is a very winding road).

### From the 17 East:

Take Exit 121 to Route 84. You can either continue on 84 East until Exit 10 - 9W South, 9W South into the Palisades Parkway South (might have some traffic in town of Newburgh) or take 84 West to Exit 1, to 6 West to 23 South until 80 East or until 46 East to Route 3 East to the Lincoln Tunnel (this road is a very winding road) or take 17 East to Exit 125 to 17M East until the end to the Old 17 South until NJ 17 South.

## To the Catskills

### New Jersey 17:

To avoid the 3 West and NJ 17 merge delay, after coming out of the Lincoln Tunnel, stay on 495 to Route 3 West. Take 3 West to 120 North Moonachie. Take 120 North to 17 North. This will take you behind Giants Stadium.

To avoid the delays caused by the 2 lane merge on the NJ 17 North by National Wholesale Liquidators, take 80 West (local lanes) to exit 62 Garden State Parkway North. Take GSP to Exit 163 which is NJ 17 North. Right before the exit, there is an overpass where one can see the traffic on the NJ 17. If it is backed up, stay on the Garden State Parkway until the Thruway North. If it is not backed up, exit and take the NJ 17 North until the Thruway.

### From the Garden State Parkway:

If the New York Thruway North is backed up take the NY Thruway South to Exit 13 to the Palisades Parkway North to Route 6 to the NY 17.

### From the Lincoln or Holland Tunnel:

Take the NJ Turnpike to 80 West (local lanes) to Exit 62 Garden State Parkway North. Right before Exit 163, there is an overpass where one can see the traffic on the NJ 17. If it is backed up, stay on the Garden State Parkway until the Thruway North. If it is not backed up, exit and take the NJ 17 North until the Thruway.

## Staten Island to New Jersey

### Via the Goethals Bridge:

Take Bay Street exit all the way to the right of the toll plaza. Stay on Bay Street which becomes Richmond Terrace (same direction as to the Staten Island Ferry) • continue on Richmond Terrace to South Avenue, make a left on South Avenue until Goethals

North Road, make a right on Goethals North Road onto the bridge or • continue on Richmond Terrace until the end, make a left on Western Avenue under Goethals Bridge, come around and onto the bridge.

### Via the Bayonne Bridge:

Take Bay Street exit all the way to the right of the toll plaza. Stay on Bay Street which becomes Richmond Terrace (same direction as to the Staten Island Ferry). Continue on Richmond Terrace under Bayonne Bridge to Morning Star Road. Make a left. Go 4 blocks to Walker Street. Make a left onto Walker to Bayonne Bridge. Take Bayonne Bridge to the 169 North into the NJ Turnpike.

### Missed the Bay Street Exit?

Exit at Clove Rd. Make a right onto Clove Rd. Continue to Forest Avenue. Make a left onto Forest Avenue. • Follow "440" signs to Bayonne Bridge or continue on Forest Avenue to Staten Island Expressway, make a right at Staten Island Expressway, continue to Goethals Bridge.

## New Jersey to Staten Island

### From the Outerbridge Crossing:

1) Take Richmond Parkway until the end, to Richmond Avenue. Make a right onto Richmond Avenue until the end to Hylan Blvd. Make a left on Hylan Blvd. Continue until the Verrazano Bridge.  
2) Immediately after Outerbridge Crossing, exit onto Page Avenue (this exit is 100 ft after toll plaza). Take Page Avenue to Hylan Blvd. Make a left on Hylan Blvd. Continue until the Verrazano Bridge.

### From the Goethals Bridge:

Exit at Forest Avenue. Make a left on Forest Avenue. Continue to Clove Rd. Make a right on Clove Rd. Continue over the Staten Island Expressway. Make a left and continue to the Verrazano Bridge.

# DON'T GET CAUGHT IN TRAFFIC

Brought to you by:



24 HOUR EMERGENCY RESPONSE & RECOVERY: 718-854-4548 ext. 4

# Mark Tauber Brokerage is now part of HUB International Northeast.

Mark Tauber Insurance Brokerage is now part of HUB International Northeast. We are still the team you've always counted on for astute advice and impeccable personal service – now with more products, more service and more resources to provide you even better solutions.

For comprehensive risk protection programs for Commercial Property, Liability and Workers' Compensation, please give us a call.

## ***HUB International Northeast Insurance Brokers***

**Mark Tauber**

1825-65th Street | Brooklyn, NY 11204

Phone: 718-621-0100 | Fax: 718-621-9390

Email: [mark.tauber@hubinternational.com](mailto:mark.tauber@hubinternational.com)

***[www.hubinternational.com](http://www.hubinternational.com)***



# CATSKILL REGIONAL MEDICAL CENTER

## Advancing Patient Care for Our Community



### EXPANDED EMERGENCY DEPARTMENT



We're expanding our Emergency Department at our main Harris campus from 7,500 square feet to 17,500 square feet to decrease your wait times and serve more patients.

The number of fast track bays for minor injuries will be increased from four to eight. Additionally, the current eight acute care bays and one mental health bay will be expanded and redistributed to 16 bays.

For your comfort, Rabbi Moshe Fried is available to serve as your Emergency Services Liaison during the summer months.

### CHESED HOSPITALITY ROOM

We offer a Chesed room at our Harris campus, where families of patients can sit, relax, pray and recover their emotions in a private setting. The room is equipped with kosher snacks and packaged meals, comfortable chairs, Jewish reading materials, tapes and other sources of information.



A member of the Greater Hudson Valley Health System

P.O. Box 800 · 68 Harris Bushville Road  
Harris, NY 12742 · 845.794.3300

8881 NYS Route 97  
Callicoon, NY 12723 · 845.887.5530

[www.crmcny.org](http://www.crmcny.org)

**Give your kids  
the same  
comprehensive  
health services  
that they have  
all year-round.**

ODA Primary Health Care  
is in the mountains  
this summer.

6 Dairyland Road  
Woodridge NY  
Tel: 845-434-2060  
Fax: 845-434-2020



Primary Health Care Center

## S & M AUTO SALES

FINANCING AVAILABLE WASH & LUBE

1175 RT. 52, LOCH SHELDRAKE, NY

NEXT TO SHERMAN'S SERVICE CENTER

[WWW.SANDMAUTOSALES.COM](http://WWW.SANDMAUTOSALES.COM)

845-436-9447



### SHERMAN'S SERVICE CENTER

Route 52, Loch Sheldrake, NY

**(845) 434-8089**

- All major and minor repairs
- NYS Inspections
- Custom Pipe Bending
- 24 HOUR TOWING

[www.shermansservicecenter.com](http://www.shermansservicecenter.com)



# LANDAU'S U-P-S-T-A-T-E SUPERMARKET

*Delicious!*  
Shabbos Menu Weekly.

Now fully renovated with a full line of:

-  Fish
-  Sushi
-  Grocery
-  Fresh Vegetables
-  Seasonal Fruits
-  Meat
-  Deli Department

We will have our all year round, tasty dips all under one large roof.

# LANDAU'S U-P-S-T-A-T-E SUPERMARKET

T: 845.436.1267 F: 845.436.1269  
3 Railroad Plaza South Fallsburg, NY (off Main St.)

  
T: 718.388.1200

  
F: 718.388.1201

# DEPENDABLE COLLISION

Insurance Claim Service

- Customer Service
- Expert Color Matching
- Insurance Claims
- Recognized by all major Insurance Companies
- Free pick up from Tri-State area

Here's where we come in...



Yossi Grunfeld . Noson Josephy

T. 718.871.6168

F. 718.871.3911

1469 39th Street

Brooklyn, N.Y. 11218



Reb Meyer Baal Hanes  
Kolel Chibas Yerushalayim

לשמור  
בכל דרכיך...  
New York

## Are You Fully Protected?

When on the road, or on vacation,  
Remember the poor of Eretz Yisroel

**Tzedokas Reb Meyer Baal Hanes**  
will protect you on your way!

*The proven Segullah for Shmiras Haderech!*



Call today for Your  
**Travel Pushka**

Special Made to Hook on Dashboard  
with Tefilas Haderech on the Back Side!

We will ship your Pushka  
to your Bungalow or Camp

To Donate by Credit Card Call our Office Today!

Wishing you a Happy & Healthy Summer

CENTRAL OFFICE: 4802-A 12th AVE.  
BROOKLYN, NEW YORK 11219

CENTRAL OFFICE  
**1-718-633-7112**

OUT OF N.Y.C. TOLL FREE  
**1-866-PUSHKA-0**  
7874520

2

## GREAT SUMMER LOCATIONS

MONTICELLO • SWAN LAKE



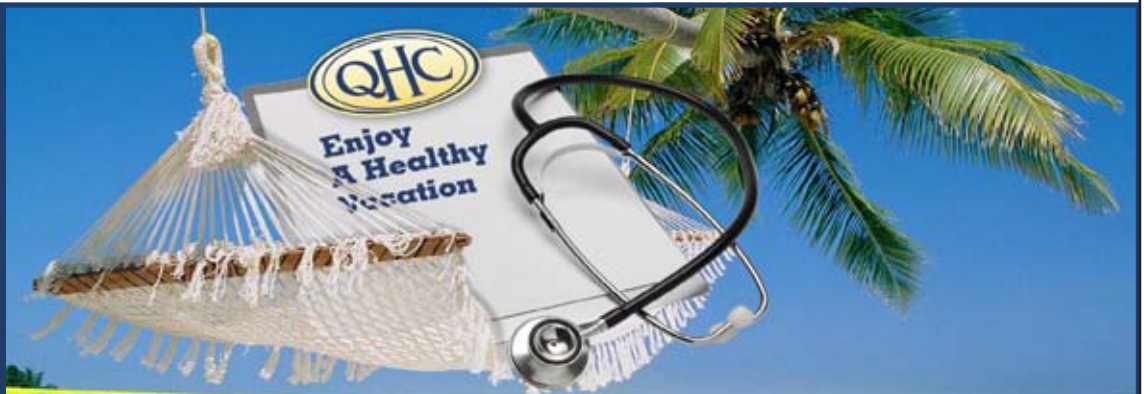
Emergency Room Doctors  
from Manhattan Hospitals

Our doctors are available  
24 Hours in case of emergency

Most insurances accepted  
without changing pcp

We Dispense Starter  
doses of antibiotics

Adult Medicine, Pediatric,  
Podiatry, Internal  
Medicine, Suturing, Blood  
Work, Well Visits,  
Vaccines, Minor Surgical  
Procedures, Foreign  
Objects Removal, Ingrown  
Toenail



QHC Upstate Medical PC

19 Prince Street

Across The Post Office

**845-794-3547**

HOURS : Daily 10:00am to 7:00pm

Friday 10:00am to 5:00pm

- Parking Available -

OPEN  
מזמין שבת



QHC Upstate Medical PC

38 Old White Lake Turnpike

Right Next to Apple's and Rosenberg's Bungalow Colony  
Swan Lake NY 12783

**845-292-3544**

HOURS : Daily 11:00am to 7:00pm

Friday 10:00am to 4:00pm

- Parking Available -



**MEHADRIIN**  
 QUALITY SINCE 1950



חלב ישראל  
 CHOLOV YISROEL

# Soft Serve



Just like the machine Soft-Serve you love at the ice-cream parlor... Now right in your own home! The newest innovations in ice-cream making combined with the finest ingredients for the most delicious Soft Serve ever!

**Look for this delicious treat at your local supermarket freezer**

**Decadent Ice Cream Dessert**

- 9 x 13 Pan
- 2 boxes J&J Mini Dairy Ice Cream Sandwiches
- 1/2 Gallon Mehadrin Soft Serve Ice Cream
- Dairy Caramel Cream
- Canned Whipped Topping (spray top)
- 1 Container Viennese Crunch, chopped

**Directions**  
 Line pan with 1 layer of J&J Mini Ice Cream Sandwiches. Spread thin layer of caramel over sandwiches. Place 2 Mini Scoops of Soft Serve Ice Cream over each sandwich. Garnish with whipped topping and Viennese crunch. Freeze until ready to serve.

To schedule the Kosher Ice Cream Truck for your Camp or Colony call 347.788.8396

DISTRIBUTED BY: MIC BROOKLYN, NY 11237

Pizza  
Calzones  
Knishes  
Soft Ice Cream  
Sushi  
Fish  
Hot Dishes  
Salad Bar  
Pasta  
and More



# Main Street Pizza

SOUTH FALLSBURG, NY  
Pizza, Bagels and More!



Under the strict supervision of  
ר' בנימין הלוי גרובער שליט"א

Opening June 1st

## Main Street Pizza

5202 Main Street, South Fallsburg NY - Hours: 10:30am to 8:30pm

**(845) 434-5845**

FREE DELIVERY in surrounding area.  
Minimum needed for longer distances

**PARTY ROOM AVAILABLE**

Attention Day Camps, Camps, Colonies: Call and Reserve Early To Lock In Best Pricing.

Keep our seniors  
and families  
secure and independent



Helping more than 1,000  
New Yorkers stay secure and  
independent every year.

This year, we installed:

- 450 grab bars
- 109 doorbells
- 210 door locks
- 55 carbon monoxide detectors

and more...

Donate to Safe at Home at

[www.metcouncil.org](http://www.metcouncil.org)  
or call 212.453.9500



Proud Affiliate of  
WJA Federation  
of New York

REVIVAL  
Home Health Care

HAS BEEN  
RECOGNIZED  
AS THE JEWISH COMMUNITY'S  
#1 HOME CARE AGENCY

REVIVAL  
HOME HEALTH CARE INC.  
*A Certified Home Care Agency*

YOUR HEALTH • YOUR HOME • YOUR CHOICE

Main Office: T: 718-629-1000 F: 718-629-1200  
Williamsburg: T: 718-237-5700 F: 718-237-4499

[www.revivalhhc.org](http://www.revivalhhc.org)

# Special Thanks

A Note Of Appreciation To Ptex Group For Coordinating  
And Directing The Catskills Hatzalah 2011 Summer Campaign

**Creative:** Joel Klein

**Copy:** Abraham Bree

**Design:** Eliezer Weinberger

**Coordination:** Mechy Fischbein



**Toll Free: 1.888.977.PTEX**

Phone: 718.853.8666 • [www.ptexgroup.com](http://www.ptexgroup.com)

# EMERGENCY NUMBERS

**CATSKILLS HATZALAH** (718/212) 387-1750  
(718/212) 230-1000

<b>POLICE/FIRE EMERGENCIES</b>	911
<b>SULLIVAN COUNTY STATE POLICE</b>	845-292-6600
<b>SULLIVAN COUNTY SHERIFF</b>	845-794-7100
<b>ULSTER COUNTY STATE POLICE</b>	845-626-2800
<b>ULSTER COUNTY SHERIFF</b>	845-338-3640
<b>ELLENVILLE POLICE</b>	845-647-4422
<b>FALLSBURG POLICE</b>	845-434-4422
<b>LIBERTY (VILLAGE) POLICE</b>	845-292-4422
<b>MONTICELLO POLICE</b>	845-794-4422

## WHEN CALLING CATSKILLS HATZALAH IMPORTANT TIPS TO REMEMBER DURING AN EMERGENCY

- WHEN CALLING CATSKILLS HATZALAH, CLEARLY STATE YOUR NAME, ADDRESS AND PHONE NUMBER
- DO NOT HANG UP THE TELEPHONE UNTIL INSTRUCTED TO DO SO BY THE DISPATCHER
- WHEN A CALL OCCURS INSIDE A COLONY, AN ADULT SHOULD BE SENT TO THE COLONY ENTRANCE TO GUIDE RESPONDING MEMBERS
- WHEN AN EMERGENCY OCCURS AT NIGHT, THE ADULT GUIDE SHOULD BRING A FLASHLIGHT TO THE COLONY ENTRANCE – EVEN ON FRIDAY NIGHT

## BIKE SAFETY TIPS

- Don't get caught up in a bike's chain:** Always wear ankle clips, elastic bands, or tuck pants into shoes.
- Be visible:** Wear bright-colored clothes by day and light-colored clothes at night.
- Protect your head:** Always wear an approved helmet.
- Avoid slip-on shoes:** They can easily fall off.



- Obey all traffic signs and lights.**
- Carefully look both ways before entering a street.**
- Watch for car doors opening.**
- Only one person at a time should ride on a bike.**



## IMPORTANT WEBSITES

<b>KOSHERTRAVELINFO.COM</b>	FIND A MINYAN, KOSHER FOOD, LODGING ETC.
<b>ROADINFORM.COM</b>	CATSKILLS TRAFFIC UPDATES FOR BEST ROUTES TO AND FROM COUNTRY
<b>YWN.COM</b>	FIND/SHARE-ARIDE PROGRAM (SERVICE OF YESHIVA WORLD NEWS)
<b>CATSKILLSHATZALAH.ORG</b>	CATSKILLS HATZALAH INFORMATION/ON LINE CONTRIBUTIONS/DEDICATIONS
<b>CHVAC.NET</b>	DOWNLOAD GPS FOR CATSKILLS BUNGALOWS COLONIES, CAMPS AND HOTELS

## IMPORTANT PHONE NUMBERS

<b>ZMANIM HOTLINE</b>	718-331-TIME
<b>MISASKIM</b>	718-854-4548
<b>POISON CONTROL</b>	800-222-1222
<b>ELECTRIC OUTAGES &amp; EMERGENCIES</b>	800-572-1131
<b>KOL MEVASER</b> (TRAFFIC REPORTS & ALERTS)	212-444-1100 #7
<b>INTERNATIONAL CHESED HELPLINE</b>	718-705-5000

## HOSPITALS

<b>CATSKILL REGIONAL MEDICAL CENTER</b> (HARRIS HOSPITAL)	845-794-3300
<b>ELLENVILLE HOSPITAL</b>	845-647-6400
<b>HORTON ORANGE REGIONAL MEDICAL CENTER</b> (MIDDLETOWN)	845-343-6161
<b>WESTCHESTER MEDICAL CENTER</b> (TRAUMA AND BURN CENTER)	914-493-7000
<b>CATSKILL BIKUR CHOLIM</b> (ELLENVILLE AND HARRIS HOSPITALS)	845-354-3233

## TRANSPORTATION

<b>HEIMISH CATSKILL'S LOCAL CAR SERVICE</b>	845-807-3080
<b>LADY DRIVERS-STEINBERGER'S CAR SERVICE UPSTATE</b>	718-781-8909
<b>HEIMISH LONG DISTANT CAR SERVICE</b> (TO AND FROM THE COUNTRY)	917-548-7814
<b>SHIMMY'S LONG DISTANCE EXPRESS VAN</b> (FAMILIES/PACKAGES)	917-642-2077
<b>SUREWAY LIBERTY</b>	845-292-8805
<b>SUREWAY MONTICELLO</b>	845-794-5050
<b>SUREWAY FALLSBURG</b>	845-434-6550
<b>YELLOW CAB</b>	845-794-7777

## EREV SHABBOS EMERGENCY ACCOMODATIONS (IF STUCK ON THE ROAD)

<b>MONSEY-THRUWAY EXITS 14A/B</b>	845-371-6333
<b>NEW SQUARE-PALISADES PARKAY EXIT 11</b>	845-354-0222
<b>MONROE-RT 17, EXIT 130</b>	845-783-9494/845-783-8688
<b>MIDDLETOWN-RT 17, EXIT 120</b>	845-343-7845
<b>ROCK HILL-RT17, EXIT 109</b>	845-434-7470

EVERY SUMMER, CATSKILLS HATZALAH  
RESPONDS TO OVER 2,000 EMERGENCY CALLS...  
BUT WE CAN'T SAVE ALL THOSE LIVES

YOUR SUPPORT WILL MAKE THE  
**difference!**



Prex Group 718.853.8666

## WE NEED YOUR HELP!

At the direction of our Va'ad HaRabbonim, every summer community, yeshiva, camp and kollel must appoint a representative to conduct the Shabbos Hatzalah Emergency Campaign appeal on Parshas Pinchas.



## הצלה דאך אייער הילף!

הצלה דאך צוקומען צו אן אפיעל אין יעדע איינציגסטע באזונדערע קאנטרי, קעמפ, ישיבה, קאלאני, צו קענען ערדיין דעם ציל צו ראטעווען נפשות נמות לויים. הצלה קומט צו אייער קעטסקיל סביבה ווי אייער איד זענט, קומט אום אנטקעגן ביי דעם 'שבת הצלה' אפיעל אין אייער סביבה.

**Shabbos Hatzalah שבת הצלה**

**CATSKILLS CAMPAIGN זומער קאמפיין**

